

Several Native Plants Show Reclamation Potential

John G. Scheetz and Bradley Anseth

Several hundred native plants show potential for use in mined land and saline seep reclamation as well as for range revegetation in Montana and Wyoming. Since 1975 over 300 legume, grass, and browse species have been tested and evaluated for use in mined land reclamation at the Plant Materials Center near Bridger, Mont., in the southern part of the state near Wyoming.

The latest annual report from the Center says that over 80 of these will be studied further. The Center has released four native species for commercial seed production that are effective in mined land reclamation: Critana thickspike wheatgrass, Rosana western wheatgrass, Goshen prairie sandreed, and Wytana fourwing saltbush.

Species to reclaim poorly drained saline alkaline soils have been evaluated by the Center but only 20 accessions of the 452 tested have developed stands significant enough to justify continued examination.

One new management technique, sprigging root stock directly into a saline area, shows promise for speedier reclamation of these areas. Sprigging trials at Hardin, Fort Benton, Conrad, and Malta, Mont.; and Powell, Wyo., provide variety in climate, soils, and seedbed conditions for plant adaptation.

To date the Center has not released plants for saline seep reclamation but test data on a beardless wildrye selection show promise.

The four plants mentioned above that have been released for mined land reclamation are also suitable for rangeland seedings. In addition, two other plants have been released by the Center for commercial seed production: Lutana cicer milkvetch, a productive, nonbloat legume for hay and pasture; and Garrison creeping foxtail, a highly productive pasture grass for use in permanently wet areas.

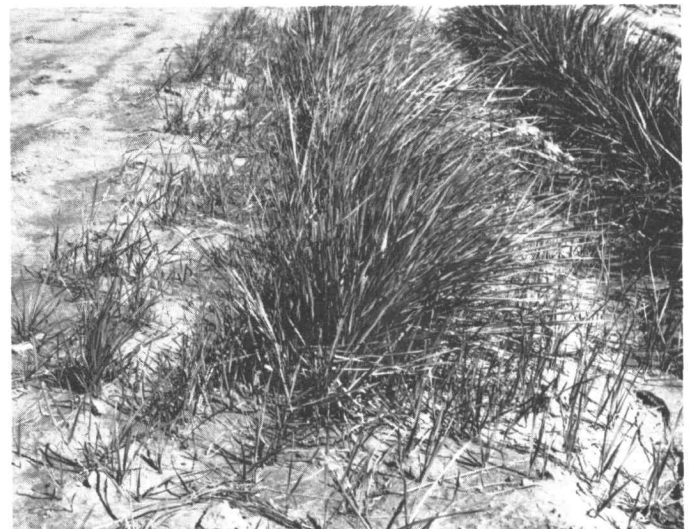
The Plant Materials Center at Bridger, Mont., has been owned by the conservation districts of Montana and Wyoming and operated by the Soil Conservation Service since 1959.

Authors are manager, SCS Plant Materials Center at Bridger, Montana; and public information officer, Soil Conservation Service, Bozeman, Montana.



SCS Photo - A.A. Thornburg

Excellent stand of Critana thickspike wheatgrass on the Charles Jarecki Ranch near Polson, Montana.



SCS Photo

First year growth of Rosana western wheatgrass showing strong development of rhizomes.

New from SCSA

Resource-Constrained Economics—the North American Dilemma, a publication based on material presented at the 34th Annual Meeting of the Soil Conservation Society of America, is now available.

The authors seek to help professionals in natural resources find acceptable solutions to emerging problems and issues.

The 307 page book is available for \$8.50 from SCSA, 7515 Northeast Ankeny Rd., Ankeny, Ia. 50021.

For sale, as a unit, *Journal of Range Management*, Vols. 1-16 hard bound; Vols. 17-32 unbound; excellent condition. \$1,100. Contact:

R.R. Humphrey
9211 E. Rosewood
Tucson, Arizona 85710