

AMS DATING MAMMOTH BONES: COMPARISON WITH CONVENTIONAL DATING

Yuriy K Vasil'chuk^{1,2} • Alla C Vasil'chuk¹ • Austin Long³ • A J T Jull⁴ • D J Donahue⁴

ABSTRACT. Fossilized Siberian mammoth remains are important indicators of environmental change in the Late Pleistocene. The NSF-Arizona AMS Laboratory radiocarbon results on amino acid separations compare well with mammoth bone collagen from the same specimens treated by HCl and dated by beta counting (the Russian Academy Geological Institute Radiocarbon Laboratory). Neither laboratory was aware of the other's dates for these comparisons. The results coincide very closely (a difference of 50–800 yr), and demonstrate that AMS dating provides a very good perspective for applications of past mammoth population studies.

INTRODUCTION

The Late Pleistocene (40–10 ka BP) syncryogenic deposits (i.e. accumulated simultaneously with freezing) of Siberia and the Arctic coastal plain of North America contain thick syngenetic ice wedges and well-preserved extinct mammoth remains. These include bones, partially articulated skeletons, and some whole carcasses. Mammoth extinction can only be understood in the context of their temporal and spatial distribution, as well as their diet and the temporal and spatial distribution of available food. Thus, answers to questions surrounding the cause or causes of mammoth faunal extinction require knowledge of a cluster of intricately interrelated palaeogeographical and palaeobotanical conditions. The historically earliest mammoth findings (Pfizenmayer 1926) were by Ides (Yenisey River, 1707), Sarychev (Alazeya River, 1787), and Adams (Lena River, 1799). More than 40 whole carcasses and skeletons have been discovered (Sokolov 1982; Shilo et al. 1983). During the last decade, convincing answers to some of these questions have emerged. Radiocarbon dates of mammoth remains (Vasil'chuk 1992; Vasil'chuk et al. 1997) and a stable isotope study of the permafrost hosting them (Vasil'chuk 1992) are among the data contributing to a systematic history of Late Pleistocene mammoth distribution in vast areas of Siberia and some regions of Europe.

Dating Mammoth Bones

We have summarized about 300 ¹⁴C dates of mammoth remains in Siberian permafrost areas (Vasil'chuk 1992; Sulerzhitsky 1995; Vasil'chuk et al. 1997), and about 200 dates from regions of Europe that were permafrost during the Late Pleistocene but not at present (Vasil'chuk 1992; Sulerzhitsky 1995; Stuart 1991). It is known that mammoths inhabited the entire permafrost area from the Arctic coast southward to at least 40°N. Mammoth carcasses have been studied intensely in the regions of present-day permafrost (Sokolov 1982; Shilo et al. 1983). Even in cases of discovery in permafrost, there is no guarantee that the remains had been frozen continuously since death. As redeposition of bones into younger sediments must be considered a possibility, special cleaning procedures are required before ¹⁴C dating. The currently acceptable pretreatment technique for beta-counting laboratories, separation of bone collagen with HCl, results in coincident ¹⁴C ages on bone specimens from the same skeleton but with different degrees of preservation (Sulerzhitsky 1997; Vasil'chuk and Vasil'chuk 1998). Interlaboratory comparisons employing this pretreatment also show comparable results (Arslanov and Svezhentsev 1993; Long et al. 1994; Vasil'chuk and Vasil'chuk 1998). Accelerator mass spectrometric (AMS) ¹⁴C laboratories results on amino acid separations compare well with bone collagen from the same specimens treated by HCl and dated by

¹Geology and Geography Department, Lomonosov's Moscow University, Vorob'yovy Hills, 118899, Moscow, Russia

²Corresponding author. Email: vasilch@orc.ru.

³Department of Geosciences, University of Arizona, Gould-Simpson 208, Tucson, Arizona 85721-0077, USA

⁴NSF-Arizona AMS Laboratory, University of Arizona, 1118 East Fourth Street, Tucson, Arizona 85721-0081, USA

beta counting (Table 1). The NSF-Arizona AMS Laboratory ¹⁴C results on amino acid separations compare well with mammoth bone collagen from the same specimens treated by HCl and dated by beta counting (the Russian Academy Geological Institute Radiocarbon Laboratory). Neither laboratory was aware of the other's dates for these four comparisons.

Table 1 AMS and conventional ¹⁴C measurements of mammoth remains

Sample locations and coordinates (numbers as shown in Figure 1)	Material	Lab code	AMS date, yr BP (conventional date)	δ ¹³ C _{PDB} (‰)
Middle part of Shchuch'ya River, near Edem'yaha mouth (South Yamal Peninsula, Western Siberia) 67°N, 69°E (1)	Bone	AA-27371	32,090 ± 480	-21.9
Middle part of Shchuch'ya River, near Edem'yaha mouth (South Yamal Peninsula), 67°N, 69°E (2)	Molar	AA-27372	12,535 ± 80	-21.5
Lower Yana River, northwest Yakutia, Mus-Khaya cross-section, 71°N, 136°E (3)	Bone	AA-27373 GIN-8711	35,400 ± 2,000 (34,600 ± 470)	-20.1
Mal'ta River, Angara River Basin, 43°N, 104°E (4)	Bone	AA-27374 GIN-8476	14,940 ± 170 (14720 ± 130)	-21.7
Kostyonki Paleolithic camp, 40 km from Voronezh city, 43°N, 33°E (5)	Bone	AA-27375 GIN-7992	23,120 ± 460 (23,800 ± 150)	-21.3
Shokal'sky Island, Arctic Ocean, 73°N, 74°E (6)	Bone	AA-27376 GIN-8427	13,600 ± 160 (13650 ± 170)	-22.5
Lower Yuribey River (East Yamal Peninsula), 69°N, 69°E (7)	Tusk	AA-27377	10,460 ± 120	-25.0
Sabettayaha River, 30 km from Sabetto Settlement (Yamal Peninsula), 69°N, 69°E (8)	Tusk (very large)	AA-27378	10,420 ± 130	-25.0
Middle Yuribey River (Central Yamal Peninsula), 69°N, 69°E (9)	Tusk	AA-27379	13,940 ± 170	-25.0
Sohontosyo Creek, West Yamal Peninsula, 25 km northeastern Ust'-Yuribey Settlement, 69°N, 69°E (10)	Jaw of baby mammoth	AA-27380	29,700 ± 1,000	-25.0
Sohontosyo Lake, West Yamal Peninsula, 25 km northern Ust'-Yuribey settlement, 69°N, 69°E (11)	Tooth of bison	AA-27381	32,600 ± 1,400	-25.0

DISCUSSION AND CONCLUSION

The mammoth bone dates presented here fill a gap between 32,000 and 10,000 BP in the Yamal Peninsula and provide evidence that mammoths lived in the north of western Siberia between 32 and 10 ka. Until now, their existence in this area during Late Pleistocene was problematic. Combined with other dates from the Siberia permafrost zone, these dates show the continuous existence of mammoths in subarctic regions.

The southern limits of mammoths' aerial extent coincide with the southern limits of polygonal wedge structures (Figure 1). The latter are reconstructed on casts distribution (Vasil'chuk 1992). ¹⁴C dates on mammoths show that they lived in permafrost areas. Their population densities are difficult to evaluate on available data, but the dates show no significant gaps in their presence in either Europe or Siberia, except, of course, at times and places where extensive ice sheets existed.

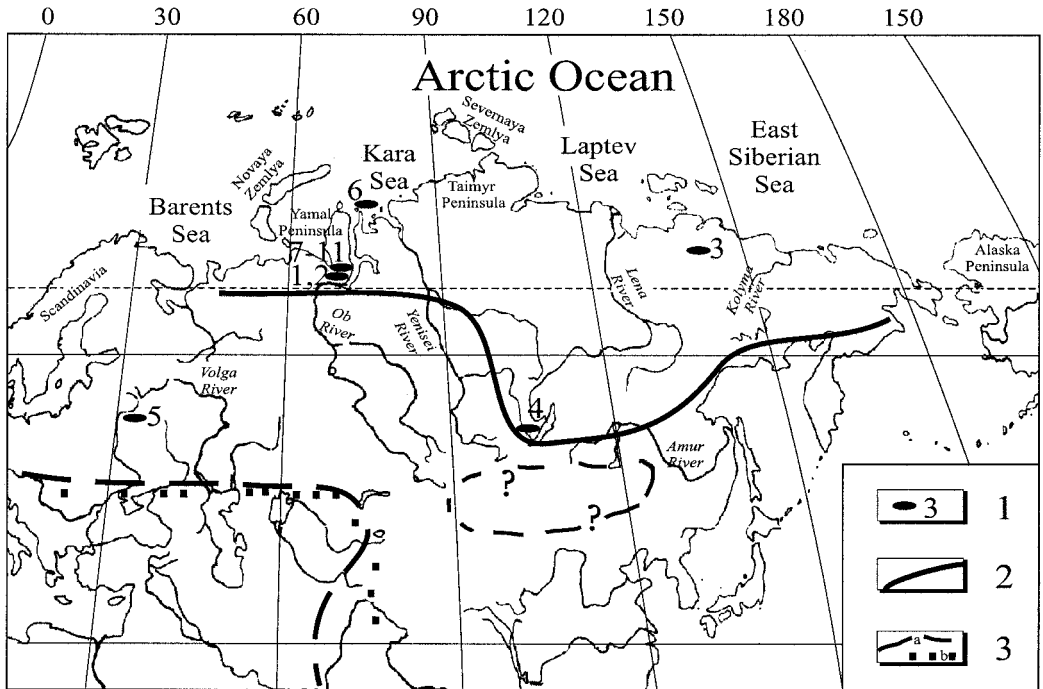


Figure 1 Map of northern Russia showing the location of the AMS-dated mammoth remains and ^{14}C dated oxygen-isotope curves of the Late Pleistocene syngenetic ice-wedge complexes. Key: (1) localities of AMS-dated mammoth remains (the numbers correspond to those in the first column of Table 1); (2) the southern boundary of modern and relict syngenetic ice wedges; (3) the southern boundary of Late Pleistocene palaeopermafrost (in northern China the boundary is problematic) zone (a – after Vasil'chuk 1992) and mammoths' area (b – after Sulerzhitsky 1995).

The fact that mammoth populations fed on grass required their biocoenoses to produce large masses of vegetation in the summer. In winter, mammoths probably consumed grass preserved under the snow cover. If mammoths had greater difficulty breaking the ice (refrozen melted snow), fewer of them would have been able to forage sufficient quantities of grass. Stable oxygen isotope records from ice-wedge ice demonstrate a dramatic shift in winter temperatures (Vasil'chuk and Vasil'chuk 1995, 1997, 1998). Changes in winter conditions, as evidently occurred at the Pleistocene-Holocene transition, was a possible cause both of temperature and food stress for mammoth populations. Similar to present tundra habitants, the mammoths faced a problem attaining food in winter. Even small diminution of available food, as a result of frequent thawing and snow crust formation, could decrease the herd population, and for population responses such as dwarfing (Lister 1993)—when the height of mammoth was not more than 1.5 m (usually the mammoth height was 3–4 m). Warmer temperatures may also have induced greater stress from human predators.

ACKNOWLEDGMENTS

We thank D Donahue for bone AMS- ^{14}C dating; H Jungner, J-M Punning, and L Sulerzhitsky for their helpful remarks and for invaluable assistance in the stable isotope and ^{14}C determinations; Nadine Budantseva, G Medvedev, V Pitul'ko, N Praslov, V Shtro, and E Vangengeim for field sampling of bones; and Kimberley Tanner Elliott for preparing the manuscript for publication. This work was partly funded by the Russian Foundation for Basic Research (grants 99-05-65075 and 00-05-64756),

by the Program of Integration of the Russian Education Ministry (grant 5.1-425), and by NSF grants SBR-92-19868 and EAR-95-08413 to the University of Arizona.

REFERENCES

- Arslanov KhA, Svezhentsev YuS. 1993. An improved method for radiocarbon dating fossil bones. *Radiocarbon* 35(3):387–91.
- Lister AM. 1993. Mammoths in miniature. *Nature* 362(6418):288–9.
- Long A, Sher A, Vartanyan S. 1994. Holocene mammoths dates. *Nature* 369(6479):364.
- Pfizenmayer EW. 1926. *Mammulleichen und Urwaldmenschen in Nordost Sibirien*. Leipzig (341 s. + 118 abb. + 3k; in German).
- Shilo N, Lozkin A, Titov E, Shumilov Yu. 1993. *Kirgilyakhsy mammoth. Palaeogeographycal aspect*. Moscow, Nauka: 214 p (in Russian).
- Sokolov VYe, editor. *Yuribeisky mammoth*. 1982. Moscow: Nauka. 160 p (in Russian).
- Stuart AJ. 1991. Mammalian extinctions in the Late Pleistocene of northern Eurasia and North America. *Biological Reviews* 66:453–562.
- Sulerzhitsky LD. 1995. Features of radiocarbon chronology of the mammoths (*Mammutus primigenius*) of Siberia and North-Eastern Europe. In: Proceedings of the Zoological Institute, St. Petersburg. *Studies of Pleistocene and Recent Mammals* 263:163–83 (in Russian).
- Sulerzhitsky LD. 1997. Features of radiocarbon chronology of the mammoths of Siberia and North-Eastern Europe, as basis for Human colonization. In: Velichko A, Soffer O, editors. *Human colonization of Earth. The global hominids settling*. Moscow: The Geography Institute of the Russian Academy of Sciences. p 184–200 (in Russian).
- Sulerzhitsky LD, Romanenko FA. 1997. Age and distribution of the “mammoth” fauna of the polar region of Asia (radiocarbon dating results). *Earth Cryosphere* 1(4):12–9 (in Russian).
- Vasil'chuk YuK. 1992. *Oxygen isotope composition of ground ice (application to paleogeocryological reconstructions)*. Two volumes. Moscow: Theoretical Problems Department, Russian Academy of Sciences and Moscow University. Vol 1: 420 p, Vol 2: 264 p (in Russian).
- Vasil'chuk YuK, Punning J-M, Vasil'chuk AC. 1997. Radiocarbon ages of mammoths in Northern Eurasia: implications for population development and Late Quaternary environment. *Radiocarbon* 39(1):1–18.
- Vasil'chuk YuK, Vasil'chuk AC. 1995. Ice-wedge formation in Northern Asia during the Holocene. *Permafrost and Periglacial Processes* 6(3):273–9.
- Vasil'chuk YuK, Vasil'chuk AC. 1997. Radiocarbon dating and oxygen isotope variations in Late Pleistocene syngenetic ice-wedges, Northern Siberia. *Permafrost and Periglacial Processes* 8(3):335–45.
- Vasil'chuk YuK, Vasil'chuk AC. 1998. ^{14}C and ^{18}O in Siberian syngenetic ice-wedge complexes. *Radiocarbon* 40(2):883–93.