

AMS ^{14}C DATING OF EQUIPMENT FROM THE ICEMAN AND OF SPRUCE LOGS FROM THE PREHISTORIC SALT MINES OF HALLSTATT

Werner Rom • Robin Golser • Walter Kutschera • Alfred Priller • Peter Steier • Eva M Wild

Vienna Environmental Research Accelerator, Institut für Radiumforschung und Kernphysik, Universität Wien,
Währinger Strasse 17, A-1090 Wien, Austria

ABSTRACT. This paper summarizes radiocarbon measurements of mainly botanical samples from the Iceman (“Ötzi”) and from his discovery site, an Alpine glacier at the Austrian-Italian border. The results were obtained by accelerator mass spectrometry (AMS) at 3 different laboratories (Vienna, Austria; Uppsala, Sweden; Gif-sur-Yvette, France) between 1992 and 1997. All the dates, except 2, are consistent with the time period 3360–3100 BC, as previously determined from bone and tissue samples from the Iceman himself. The 2 exceptional dates from wooden artifacts suggest that the site of the Iceman was used as a mountain pass for millennia prior to and after the lifetime of “Ötzi”.

For a 2nd sample complex, we studied logs from the beginning of salt mining in the world’s oldest salt mines at Hallstatt in Upper Austria. ^{14}C AMS measurements were performed in Vienna on spruce samples found in the prehistoric mines and from a log-house on the surface. Data evaluation included “wiggles matching” of different sets of tree rings. The results suggest that salt mining in the Hallstatt region took place in the 14th–13th century BC, well before the so-called Hallstatt period.

We discuss in some detail the chemical pretreatment of the samples and the data evaluation. We also present a comprehensive survey of ^{14}C dates available in the literature concerning both botanical remains from the vicinity of the Iceman and from the earliest salt mining in Hallstatt.

INTRODUCTION

Recently, 2 sample complexes of considerable archaeological significance to the early history of the Central European region were radiocarbon dated at the Vienna Environmental Research Accelerator (VERA).

Equipment from the Iceman

On 19 September 1991, a mummified corpse was discovered accidentally by tourists at the “Tisenjoch”, a high Alpine mountain pass near the Italian–Austrian border (3120 m asl). The find was quickly nicknamed “The Iceman” or “Ötzi” (after the site location in the Ötztal Alps) and received widespread attention (see e.g. Coghlan 1992; Jaroff 1992; Bahn and Everett 1993; Roberts et al. 1993; Barfield 1994). ^{14}C accelerator mass spectrometry (AMS) measurements performed on bone and on tissue samples (Bonani et al. 1992, 1994; Hedges et al. 1992; Prinoth-Fornwagner and Niklaus 1994) proved that the Iceman is world’s oldest known intact mummy. Many pieces of the Iceman’s equipment and other materials associated with his location were recovered in several post-excavations (Lippert 1992; Spindler 1993; Bagolini et al. 1995), taking place shortly after and during the cleansing of the mummy at the Römisch-Germanisches Zentralmuseum in Mainz, Germany (Egg 1992). However, only a very small fraction of these additional findings has been dated and published so far (Bonani et al. 1994; Prinoth-Fornwagner and Niklaus 1994). Botanical details of findings in connection with the Iceman are discussed in Bortenschlager et al. (1992) and Oeggl (1995). Here, we summarize the ^{14}C dating measurements performed at 3 different AMS laboratories on a representative fraction of these mainly botanical samples (see also Kutschera et al. 1998).

Spruce Logs from the Prehistoric Salt Mines of Hallstatt

The salt mines of Hallstatt, the oldest in the world (Barth 1993; Lippert 1985), are probably the most important prehistoric industrial sites in Europe. They provided the basis for the enormous wealth of this region at that time. They lasted through 3 prehistoric periods (the (Late) Bronze Age, the Early Iron Age, and the period around 1 AD, respectively), which are topographically associated with the

so-called Northern, Eastern and Western mining groups (Schauburger 1960; Lippert 1985). Each of these groups had its distinct salt production technology (Urban 1989; Barth 1993). The importance of salt for this region is reflected in the syllable “Hall”, which is derived from the ancient Greek word for salt.

The saliferous underground strata quickly closed up after the abandonment of an mine adit (passage-way), excellently preserving materials that usually are not durable (Beckel 1983). Due to modern salt mining, documented since 1311 AD, many prehistoric shafts were destroyed. However, numerous others were rediscovered, thus uncovering many objects made of leather and wood, as well as fabric remnants. ^{14}C AMS measurements were performed on spruce logs from 3 different rediscovered mines to determine when salt mining began in Hallstatt.

SAMPLE PREPARATION

We describe below the sample preparation procedures at the 3 AMS laboratories involved in the Iceman measurements.

Vienna, Austria

First, the samples were cleaned mechanically by removing adherent particles with a scalpel and cleansing with bidistilled water in an ultrasonic bath. Next, the AAA (acid-alkali-acid) method was applied to the Iceman and Hallstatt samples (see e.g. Bonani *et al.* 1994; Wild *et al.* 1998). All the samples except 2 were successively treated with 1 M HCl, 0.1 M NaOH and 1 M HCl. Each pretreatment step was performed for 1 h at 60 °C; between each step, and at the end, the samples were washed to neutral pH with bidistilled water. Our standard AAA method described above was slightly modified for 2 Iceman samples to avoid dissolution of the sample material. VERA-0056, a hair sample from an ibex (wild goat; see Table 1), was kept at room temperature during the alkaline step, and for VERA-0054 (leather, see Table 1), 0.01 M NaOH instead of 0.1 M NaOH was used and the entire AAA method was performed at room temperature. The blanks (specular graphite containing no ^{14}C) and the IAEA standard materials C-3 cellulose and C-5 wood were also subjected to our standard procedure. The IAEA standard material C-6 sucrose was not pretreated.

After chemical pretreatment, the samples, standards and blanks (usually about 10 mg), together with some Ag wire, were put into a quartz vial containing 1 g Cu(II)O rodlets. The evacuated and flame-torch sealed vials were heated in an oven at 900 °C for 4 h. Following the method of Vogel *et al.* (1984) the resulting CO_2 was transferred to a graphitization system where the CO_2 was catalytically reduced with high-purity H_2 to elemental carbon on an iron powder catalyst (< 200 mesh) according to:

(Fe, 580 °C)



The carbon-catalyst mixture of each sample was split up into 3 or 4 portions containing about 1 mg of carbon. They were pressed into Al target holders (drill holes 1.1 mm in diameter) with a recess of 0.5 mm. Two or 3 of them (i.e., duplicates or triplicates of the same sample) were used for the AMS measurements; the remaining targets were stored in an archive.

Uppsala, Sweden

Samples were cleaned mechanically first, removing visible particles, etc. Next, an AA (acid-alkali) method was applied: 1) 1% HCl for 6–8 h kept below the boiling point, 2) washing in distilled water,

3) 1% NaOH for 6–8 h kept below the boiling point, and 4) washing in distilled water. The remaining insoluble fraction was combusted with Cu(II)O at 800 °C for 10 min and graphitized using Fe and H₂ at 750 °C. Each of the 2 grass samples (Ua-2373 and Ua-2374) was pretreated uniformly, but 2 independent combustions and graphitizations for each sample were done (G Possnert, personal communication 1992).

Gif-sur-Yvette, France

All samples were divided into 2 or 3 subsamples, to which 2 different pretreatment procedures were applied: 1) an AAA method similar to the one applied in Vienna, and 2) a cellulose extraction method for the wood samples replacing the last acid step in step 1) by bleaching in NaClO₂ at 80 °C. Each subsample was also combusted and graphitized separately using Fe as a catalyst. The carbon-catalyst mixture yielded 2 or 3 targets with 1 mm diameter (M Arnold, personal communication 1998).

¹⁴C AMS measurements

In this paper, only the measurements performed at the VERA 3 MV Pelletron® accelerator (Kutschera et al. 1997; Priller et al. 1997) in Vienna are described in detail. Datings of the 2 grass samples Ua-2373 and Ua-2374 (previously published in Prinoth-Fornwagner and Niklaus 1994, but given here in much more detail in Table 1) were performed at the 7 MV EN tandem accelerator in Uppsala, Sweden (Possnert 1984). Another grass sample, 1 tree leaf sample and 6 wooden samples from the vicinity of the Iceman (see the GifA laboratory numbers in Table 1) were measured at the 3 MV Tandetron® accelerator in Gif-sur-Yvette (Arnold et al. 1987).

The datings at VERA comprised all the other Iceman samples specified in Table 1 as well as the wooden samples from Hallstatt shown in Table 2a. Samples were loaded into the 40-position target wheel of the Multi-Cathode SNICS sputter source (each position contains one target). ¹³C/¹²C and ¹⁴C/¹²C ratios were obtained by using the 3+ charge state at 2.7 MV terminal voltage. For details of the machine performance see Priller et al. (1997) and Rom et al. (1998).

The sample loading contained 9 samples from the Iceman (6 triplicates and 3 duplicates), 3 different IAEA standard materials (C-6 sucrose triplicates, C-5 wood duplicates, and C-3 cellulose triplicates) warranting a high level of quality control, 3 machine blank targets, i.e. “dead” graphite containing no ¹⁴C, and a chemistry blank duplicate, i.e. a machine blank pretreated and processed in the same way as the samples. The Hallstatt sample loading contained 10 samples (8 triplicates and 2 duplicates), C-6 sucrose and C-3 cellulose triplicates, 2 machine blanks and a chemistry blank quadruplicate. Each target was measured for 200 sec, 8 times. Two of the samples (VERA-0040 and VERA-0041) were measured in 2 consecutive target wheels. The upper limit for the error on counting statistics was about 0.5% for every target except blanks.

As a quality control of the chemistry processing and the machine setup in all the regular ¹⁴C dating measurements performed so far at VERA, a C-6 Sucrose standard has been compared to a C-3 Cellulose standard measured in the same target wheel (see Figure 4). The corresponding chemistry blanks provide the absolute ¹⁴C dating limit T_{max} for each laboratory. This limit is connected to the scatter of the blank ΔpMC_{blank} given in percent modern carbon (pMC, see Stuiver and Polach [1977]) via

$$T_{max} = -8033 \ln \left(\frac{2 \Delta pMC_{blank}}{100} \right). \quad (2)$$

(Compare with Mook and Streurmann [1983] or Donahue [1990a].)

Table 1 Summary of ^{14}C dating results for samples taken from the Iceman's equipment

Archaeo-logical find nr	Lab nr	Specification	Species	Detailed localization	Dry weight (g)	Chemical pretreatment ^a	^{14}C age (yr BP)	$\delta^{13}\text{C}$ (‰)	$\chi^2 / \chi^2\text{-test}$ (95%) ^b	Calibrated age ranges (yr BC) ^c	Fraction of age range ^d
B-91/16b	GifA-91413	Leaves, parallel sample to no. B-91/16a	Grasses (<i>Poaceae</i>)	Grasses from the cape	0.09	AAA	4550 \pm 60	-22 ^e	—	3500–3430 3380–3030	0.07 0.93
B-91/32	GifA-93033 GifA-93034 <u>GifA-94367</u> average	Stiffening of the quiver	Hazel (<i>Corylus avellana</i>)	Inner parts of the notch	0.04	AAA Cellulose Cellulose	4690 \pm 70 4620 \pm 60 4460 \pm 80 4605 \pm 40	-29 ^e -27 ^e -21 ^e -26	4.82 / 5.99	3520–3320 3220–3100	0.85 0.15
B-91/33	GifA-93035 GifA-93036 <u>GifA-94368</u> average	Wood from the pannier	Hazel (<i>Corylus avellana</i>)	Hardwood from the broken end of the hazel stem	0.05	AAA Cellulose Cellulose	4430 \pm 60 4680 \pm 60 4500 \pm 80 4540 \pm 70	-30 ^e -30 ^e -19 ^e -26	9.05 / 5.99	3550–2900	1.00
B-91/34	GifA-93038 GifA-93039 <u>GifA-94369</u> average	Wood from the pannier	Hazel (<i>Corylus avellana</i>)	Wood from the broken end of the hazel stem	0.06	AAA Cellulose Cellulose	4710 \pm 70 4670 \pm 60 4480 \pm 90 4645 \pm 40	-32 ^e -32 ^e -27 ^e -30	4.40 / 5.99	3620–3600 3520–3350	0.02 0.98
B-91/35	GifA-93040 GifA-93041 <u>GifA-94370</u> average	Wood from the bow	Yew (<i>Taxus baccata</i>)	Splinter from the broken end	0.13	AAA Cellulose Cellulose	4540 \pm 70 4700 \pm 70 4530 \pm 80 4595 \pm 40	-27 ^e -27 ^e -23 ^e -26	3.53 / 5.99	3520–3410 3390–3310 3240–3100	0.37 0.38 0.26
B-91/36	GifA-93043 GifA-93044 <u>GifA-94371</u> average	Wood from the axe-shaft	Yew (<i>Taxus baccata</i>)	Wood from the inner sides of the splitted branch	0.04	AAA Cellulose Cellulose	4440 \pm 60 4500 \pm 70 4450 \pm 70 4460 \pm 40	-31 ^e -25 ^e -27 ^e -28	0.46 / 5.99	3350–3010 2980–2920	0.96 0.04
B-91/37	GifA-93045 GifA-93046 <u>GifA-94372</u> average	Wood from the pannier	Hazel (<i>Corylus avellana</i>)	Splinter from the broken end	0.21	AAA Cellulose Cellulose	4430 \pm 70 4540 \pm 50 4420 \pm 70 4480 \pm 40	-32 ^e -28 ^e -31 ^e -30	2.68 / 5.99	3350–3020	1.00
B-91/38	GifA-93047	Leaves from the ember vessel	Norway Maple Tree (<i>Acer platanoides</i>)	Found nearby the quiver	0.08	AAA	4540 \pm 70	-28 ^e	—	3550–2900	1.00

^aAA = acid-alkali, AAA = acid-alkali-acid, Cellulose = acid-alkali + NaClO_2 pretreatment. ^b χ^2 -values, corresponding 95% confidence limits for 3 subsamples of the sample, which were independently chemically pretreated and graphitized. ^cCalibration by OxCal v2.18 with default system options and the INTCAL98 calibration curve; 95.4% confidence ranges (2 σ). ^dRelative probability of finding the true age in the respective time range. The absolute probability is obtained by multiplying by 0.954 (2 σ range). ^eError estimated to 3‰.

Table 1 Summary of ^{14}C dating results for samples taken from the Iceman's equipment (Continued)

Archaeological find nr	Lab nr	Specification	Species	Detailed localization	Dry weight (g)	Chemical pretreatment ^a	^{14}C age (yr BP)	$\delta^{13}\text{C}$ (‰)	$\chi^2 / \chi^2\text{-test}$ (95%) ^b	Calibrated age ranges (yr BC) ^c	Fraction of age range ^d
B-91/3	Ua-2373	Leaves	Grasses (<i>Poaceae</i>)	Grasses from the filling of his left shoe	0.13	AA	4620 \pm 75 4605 \pm 70 4612 \pm 51	-26.0 -25 ^e	0.02 / 3.84 ^d	3650–3100	1.00
B-91/16a	Ua-2374	Leaves	Grasses (<i>Poaceae</i>)	Grasses from the cape	0.07	AA	4250 \pm 70 4450 \pm 75 4343 \pm 100	-24.5 -25 ^e	3.80 / 3.84 ^d	3350–2650	1.00
B-91/35	VERA-0050	Wood from the bow, parallel sample to no. B-91/35	Yew (<i>Taxus baccata</i>)	Recovered during sample washing	—	AAA	4500 \pm 30	-24.9 \pm 1.2	0.01 / 3.84 ^d	3350–3090	1.00
91/96	VERA-0051	Wood	Hazel (<i>C. avellana</i>)	Recovered during sample washing	0.06	AAA	4520 \pm 30	-27.2 \pm 1.2	0.17 / 5.99 ^d	3360–3100	1.00
91/139	VERA-0053	Charcoal from the ember vessel	Conifers	Recovered during sample washing from the meltwater channel	0.27	AAA	4690 \pm 40	-23.0 \pm 1.9	0.08 / 3.84 ^d	3630–3580 3540–3360	0.15 0.85
91/139	VERA-0049	Leaves from the ember vessel, parallel sample to no. B-91/38	Norway Maple Tree (<i>Acer platanoides</i>)	Recovered during sample washing from the meltwater channel	0.06	AAA	4510 \pm 40	-27.2 \pm 1.8	0.11 / 3.84 ^d	3360–3090 3060–3040	0.98 0.02
92/181	VERA-0054	Leather	—	Recovered during sample washing	0.07	AAA	4480 \pm 40	-22.1 \pm 1.4	0.57 / 5.99 ^d	3350–3020	1.00
92/275	VERA-0048	Wood, binding material	Green Alder (<i>Alnus viridis</i>)	Found in the western part of the southern rock-rib	0.04	AAA	2500 \pm 40	-24.9 \pm 1.8	0.75 / 5.99 ^d	800–410	1.00
92/283	VERA-0056	Hair	Ibex (<i>Capra ibex</i>)	Sediment from the gully	0.49	AAA	4510 \pm 30	-22.2 \pm 1.7	0.13 / 5.99 ^d	3360–3090	1.00
92/283	VERA-0055	Mosses	<i>Polytrichum sexangulare</i>	Sediment from the gully	0.08	AAA	4700 \pm 40	-23.0 \pm 1.6	0.29 / 3.84 ^d	3640–3560 3540–3370	0.22 0.78
92/292	VERA-0052	Wood	Pine (<i>Pinus</i> sp.)	Found on the southern rock-rib	0.02	AAA	5820 \pm 40	-21.0 \pm 1.5	5.52 / 5.99 ^d	4780–4540	1.00

^aAA = acid-alkali, AAA = acid-alkali-acid, Cellulose = acid-alkali + NaClO₂ pretreatment. ^b χ^2 -values and corresponding 95% confidence limits for ^d two independent graphitizations of the same chemically uniformly pretreated sample; ^d several targets of a uniformly pretreated and graphitized sample. ^cCalibration by OxCal v2.18 with default system options and the INTCAL calibration curve. The 95.4% confidence ranges (2 σ) are given. Given ¹⁴C ages were rounded according to (Stuiver and Polach 1977) before calibrating. ^eRelative probability of finding the true age in the respective time range. The absolute probability is obtained by multiplying with 0.954 (2- σ range). ^f $\delta^{13}\text{C}$ estimated, not measured.

Table 2a. Summary of ^{14}C results for samples taken from logs in the salt mines of Hallstatt^a

Lab nr	Archaeological identification nr (inventory nr)	Dendro- identification	Site	Location (mining group)	Species	Weight (g)	¹⁴ C age (yr BP)	δ ¹³ C (‰)	χ ² / χ ² -test (95%) ^b	Calibrated age ranges (yr BC) ^c	Fraction of age ranged ^d
VERA-0040	Hallstatt 1997/07 (77391)	Log #1, outermost rings (58–66)	Grüner mine	Northern	Spruce	0.071	3275 ± 35 3220 ± 60 3260 ± 35	-19.0 ± 0.7 -20.4 ± 0.8 -19.7 ± 0.5	0.63 / 3.84 ^d	1620–1430	1.00
VERA-0041	Hallstatt 1997/08 (77391)	Log #1, innermost rings (1–10)	Grüner mine	Northern	Spruce	0.183	3080 ± 35 2970 ± 60 3060 ± 45	-24.8 ± 0.8 -28.4 ± 0.7 -26.6 ± 0.5	2.58 / 3.84 ^d	1430–1160 1140–1130	0.99 0.01
VERA-0042	Hallstatt 1997/09 (73232D)	Log #2, outermost rings (40–49)	Grüner mine	Northern	Spruce	0.102	3040 ± 40	-20.9 ± 0.9	0.41 / 3.84 ^d	1410–1160 1140–1130	0.98 0.02
VERA-0039	Hallstatt 1997/06 (88887)	Log #3, outermost rings (68–76)	Grüner mine	Northern	Spruce	0.112	3020 ± 45	-20.8 ± 1.5	0.27 / 3.84 ^d	1400–1120	1.00
VERA-0043	Hallstatt 1997/10 (68795C)	Log #4, outermost rings (71–80)	Log house	—	Spruce	0.035	3070 ± 40	-22.3 ± 0.7	1.87 / 5.99 ^d	1430–1190	1.00
VERA-0035	Hallstatt 1997/02 (4842G)	Log #5, innermost rings (1–10)	Appold mine	Northern	Spruce	0.371	3035 ± 40	-23.9 ± 1.2	0.47 / 5.99 ^d	1410–1160 1140–1130	0.97 0.03
VERA-0034	Hallstatt 1997/01 (4842G)	Log #5, outermost rings (41–50)	Appold mine	Northern	Spruce	0.140	3040 ± 45	-22.2 ± 1.3	2.93 / 5.99 ^d	1410–1130	1.00
VERA-0034	after “wigggle matching” log #5 with VERA-0035 and VERA-0034										
VERA-0038	Hallstatt 1997/05 (FNR.90)	Log #6, innermost rings (1–8)	Tusch mine	Eastern	Spruce	0.256	2945 ± 35	-24.4 ± 1.1	0.89 / 5.99 ^d	1290–1020	1.00
VERA-0037	Hallstatt 1997/04 (FNR.90)	Log #6, intermedi- ate rings (36–45)	Tusch mine	Eastern	Spruce	0.156	2940 ± 40	-23.4 ± 1.4	0.71 / 5.99 ^d	1290–1000	1.00
VERA-0036	Hallstatt 1997/03 (FNR.90)	Log #6, outermost rings (70–80)	Tusch mine	Eastern	Spruce	0.692	2920 ± 50	-24.3 ± 2.3	0.03 / 5.99 ^d	1290–940	1.00
VERA-0036	after “wigggle matching” log #6 with VERA-0038 and VERA-0036										
										1190–1010	1.00

^aAll samples received AAA pretreatment (acid-alkali-acid).^b χ^2 -values and corresponding 95% confidence limits for ^d two independent measurements of targets of the same chemically uniformly pretreated sample mounted into different target wheels; ^d several targets of a uniformly pretreated and graphitized sample.^cCalibration by OxCal v2.18 with default system options and the INTCAL98 calibration curve. The 95.4% confidence ranges (2 σ) are given.^dRelative probability of finding the true age in the respective time range. The absolute probability is obtained by multiplying with 0.954 (2- σ range).

DATA EVALUATION AND CALIBRATION

Although AMS measurements were performed at 3 different AMS laboratories, only the data evaluation at VERA shall be discussed in detail (see also Kutschera et al. (1997); Priller et al. (1997); Rom et al. (1998)).

First, for each target j , the mean values of the $^{13}\text{C}/^{12}\text{C}$ ($R13_j$) and $^{14}\text{C}/^{12}\text{C}$ ($R14_j$) ratios, respectively, and the corresponding standard deviations of the mean ($S13_j$, $S14_j$) were computed:

$$R13_j = \frac{1}{m_j} \sum_{k=1}^{m_j} R13_{j,k}; \quad R14_j = \frac{1}{m_j} \sum_{k=1}^{m_j} R14_{j,k} \quad (3a, 3b)$$

$$S13_j = \sqrt{\frac{\sum_{k=1}^{m_j} (R13_{j,k} - R13_j)^2}{m_j(m_j - 1)}}; \quad S14_j = \sqrt{\frac{\sum_{k=1}^{m_j} (R14_{j,k} - R14_j)^2}{m_j(m_j - 1)}} \quad (4a, 4b)$$

where $R13_{j,k}$ denotes the $^{13}\text{C}/^{12}\text{C}$ ratio of the k^{th} measurement on the j^{th} target, $R14_{j,k}$ the corresponding $^{14}\text{C}/^{12}\text{C}$ ratio, m_j is the number of measurements performed at target j , $S13_j$ stands for the standard deviation of $R13_j$, $S14_j$ for the standard deviation of $R14_j$.

The error for each target originating in counting statistics only can be written as

$$Sstat_j = \sqrt{\frac{\sum_{k=1}^{m_j} (Sstat_{j,k})^2}{m_j}} \quad \text{with} \quad Sstat_{j,k} = \sqrt{\frac{R14_{j,k}}{^{12}\text{C}_{j,k}^{3+}}} \quad (4c)$$

where $Sstat_{j,k}$ denotes the counting statistical error of the $^{14}\text{C}/^{12}\text{C}$ ratio of the k^{th} measurement on the j^{th} target, $^{12}\text{C}_{j,k}^{3+}$ is the corresponding number of $^{12}\text{C}^{3+}$ ions.

In the next step, for all targets containing the same sample material, the weighted mean R of the $^{13}\text{C}/^{12}\text{C}$ (R_{13}) and the $^{14}\text{C}/^{12}\text{C}$ (R_{14}) ratios, respectively, and the corresponding internal and the external errors ($Sint$ and $Sext$) are computed. When calculating these weighted means, for the $^{13}\text{C}/^{12}\text{C}$ ratios S_j in (5) is replaced by $S13_j$, in the case of $^{14}\text{C}/^{12}\text{C}$ ratios S_j is replaced by the larger of the two errors $S14_j$ and $Sstat_j$. n is the number of targets containing the same target material.

$$R = \frac{\sum_{j=1}^n R_j \frac{1}{(S_j)^2}}{\sum_{j=1}^n \frac{1}{(S_j)^2}} \quad (5)$$

$$Sint = \sqrt{\frac{1}{\sum_{j=1}^n \frac{1}{(S_j)^2}}}; \quad Sext = \sqrt{\frac{\sum_{j=1}^n \frac{1}{(S_j)^2} (R_j - R)^2}{(n-1) \sum_{j=1}^n \frac{1}{(S_j)^2}}} = \sqrt{\frac{\sum_{j=1}^n \frac{1}{(S_j)^2} (R_j - R)^2}{(n-1)}} Sint \quad (6a, 6b)$$

For the $\delta^{13}\text{C}$ corrections we use the following definitions

$$\delta^{13}\text{C}_{\text{sample}} = \left(\frac{R13_{\text{sample}} - R13_{\text{PDB}}}{R13_{\text{PDB}}} \right) 1000\text{‰}; \quad \delta^{13}\text{C}_{\text{std}} = \left(\frac{R13_{\text{std}} - R13_{\text{PDB}}}{R13_{\text{PDB}}} \right) 1000\text{‰} \quad (7a, 7b)$$

where the subscript *PDB* denotes the PDB standard and *std* the standard material (usually C-3 cellulose) to which our measurements are referenced. The $\delta^{13}\text{C}_{\text{std}}$ is the recommended IAEA value of this particular standard material.

Eliminating $R13_{\text{PDB}}$ results in

$$\delta^{13}\text{C}_{\text{sample}} = \left(\frac{R13_{\text{sample}}}{R13_{\text{std}}} \left(1 + \frac{\delta^{13}\text{C}_{\text{std}}}{1000} \right) - 1 \right) 1000\text{‰}. \quad (8)$$

The corresponding error is obtained by using Gauss's equation for propagation of errors considering correlations.

Finally, the $^{14}\text{C}^{3+}/^{12}\text{C}^{3+}$ ratios of the samples, standards and blanks are normalized to $\delta^{13}\text{C} = -25\text{‰}$ (Stuiver and Polach 1977) by the quadratic form of the fractionation correction (see Stuiver and Robinson 1974)

$$R14_{-25, x} = R14_x \left[\frac{1 - \frac{25}{1000}}{1 + \frac{\delta^{13}\text{C}_x}{1000}} \right]^2, \quad (9)$$

where the subscript *x* holds for *sample*, *std* or *blank*.

The following background correction was used:

$$pMC_{\text{sample}} = pMC_{\text{std}}^{\text{recommended}} \frac{(R14_{\text{sample}, -25} - R14_{\text{blank}, -25})}{(R14_{\text{std}, -25} - R14_{\text{blank}, -25})}. \quad (10)$$

$pMC_{\text{std}}^{\text{recommended}}$ is the pMC value recommended by the IAEA for the particular standard material. The corresponding error again is obtained by using Gauss's equation for propagation of errors considering correlations.

This correction is valid for the following assumptions: a) the carbon masses of the sample, the standard and the blank material are all the same, and the contamination is equal for all those materials (in mass and in isotopic composition), or the carbon masses for all these materials may be different, but the contamination is strictly proportional to the mass; b) the portion of extraneous modern carbon, i.e. carbon with an $^{14}\text{C}/^{12}\text{C}$ ratio of about $1.2 \cdot 10^{-12}$ or 100 pMC, introduced as contamination is small compared to the sample, to the standard and to the blank size. This contaminating carbon is known to be in the range of a few μg (Vogel et al. 1987; Donahue et al. 1990b), compared to a few mg target size. From the data shown in Figure 4c it can be deduced that for samples at the 5-mg level, typically processed at VERA, the corresponding contamination amounts to about 15 μg modern carbon.

It is interesting to note that equation (6b) can be rearranged as

$$\sum_{j=1}^n \frac{1}{(S_j)^2} (R_j - R)^2 = \frac{(S_{ext})^2}{(S_{int})^2} (n-1). \quad (11)$$

Assuming that the R_j are independent, normally distributed random variables with mean value R and standard deviations S_j , the sum on the left side is χ^2 -distributed with $(n-1)$ degrees of freedom (see e.g. Martin 1971; Ward and Wilson 1978). Therefore, one can use this sum in a χ^2 -test for checking the hypothesis H_0 that the data R_j stem from the same normally distributed parent population with mean value R vs. the alternative hypothesis H_1 . The R_j all can have different standard deviations S_j reflecting different levels of precision in measuring the data. If the limit for a given confidence level (usually 95%) is exceeded by the sum in (11), H_1 is preferred to H_0 . One should keep in mind that ^{14}C ages are in principle not normally distributed (like the pMC values), but if the ages to be averaged do not differ too much the χ^2 -test can be applied directly to the BP values (see Ward and Wilson 1978).

Tables 1 and 2a show the results for all measurements of the Iceman and the Hallstatt samples. Table 2b gives a comprehensive summary of already published dates from the beginning of salt mining in Hallstatt. Conversion of all the ^{14}C ages to calendar ages given in this paper and also the “wiggle matching” of the spruce log samples from Hallstatt have been performed via the calibration program OxCal v2.18 (Ramsey 1995a, 1995b) using the default system options (cubic smoothing of the calibration curve, rounding off of the calibrated age ranges, etc.) and the INTCAL98 ^{14}C calibration curve (Stuiver et al. 1998). ^{14}C ages were rounded off according to Stuiver and Polach (1977) before calibrating. The so-called “wiggle matching” (referring to “wiggles” in the calibration curve, which originate in the varying ^{14}C content of the atmosphere) is a useful procedure in combining dates from several pieces of wood stemming from the same log. Since the difference in calendar age between this pieces is known via the tree-ring sequence, this additional information can be used to obtain more accurate dates (Ramsey 1995b).

Table 2b. Summary of already published ^{14}C results for samples taken from the oldest parts of the salt mines of Hallstatt

Lab nr	Site	Location (mining group)	Specific description	^{14}C age (yr BP)	Reference	Calibrated age ranges (yr BC) ^a	Fraction of age range ^b
GrN-19975	Grüner mine	Northern	—	3077 ± 13	Barth (1993–94)	1410–1260	1.00
GrN-6047	Grüner mine	Northern	—	2950 ± 35	Barth (1974)	1300–1020	1.00
VRI-345	Grüner mine	Northern	Pick handle	2810 ± 90	Barth (1974)	1260–1240 1220–800	0.01 0.99
GrN-19842	Grüner mine	Northern	—	2880 ± 35	Barth (1993–94)	1210–920	1.00
VRI-267	Flechner mine	Northern	Fire-sticks	2920 ± 100	Felber (1973)	1400–800	1.00
GrN-19840	Tusch mine	Eastern	—	2980 ± 50	Barth (1993–94)	1380–1020	1.00
GrN-19973	Tusch mine	Eastern	—	2966 ± 16	Barth (1993–94)	1260–1120	1.00
VRI-558 ^c	Kaiser-Josef-adit (Kilb mine ^d)	Eastern	Twigs	2990 ± 100	Felber (1973)	1450–900	1.00
VRI-258	Kaiser-Josef- Querschlag I	Eastern	Wooden frag- ment of a tool	2810 ± 90	Felber (1973)	1260–1240 1220–800	0.01 0.99

^aCalibration by OxCal v2.18 with default system options. The 95.4% confidence ranges (2 σ) are given. Given ^{14}C ages were rounded according to (Stuiver and Polach 1977) before calibrating.

^bRelative probability of finding the true age in the respective time range. The absolute probability is obtained by multiplying with 0.954 (2- σ range).

^cMarked as unexpectedly high in (Felber 1973) and discarded as a statistical outlier in (Barth 1993–1994).

^dSee Barth (1993–1994).

All except 1 of the averaged ^{14}C ages shown in Table 1 are weighted averages. The corresponding errors for the Gif-sur-Yvette samples are internal errors, only if the 95% confidence limit of the above-mentioned χ^2 -test is exceeded the unweighted mean and the corresponding standard deviation is given (see archaeological find number B-91/33 in Table 1). The averaged ^{14}C ages of the samples measured at Vienna and also of those measured at Uppsala were determined as described above using the larger of the internal and external errors.

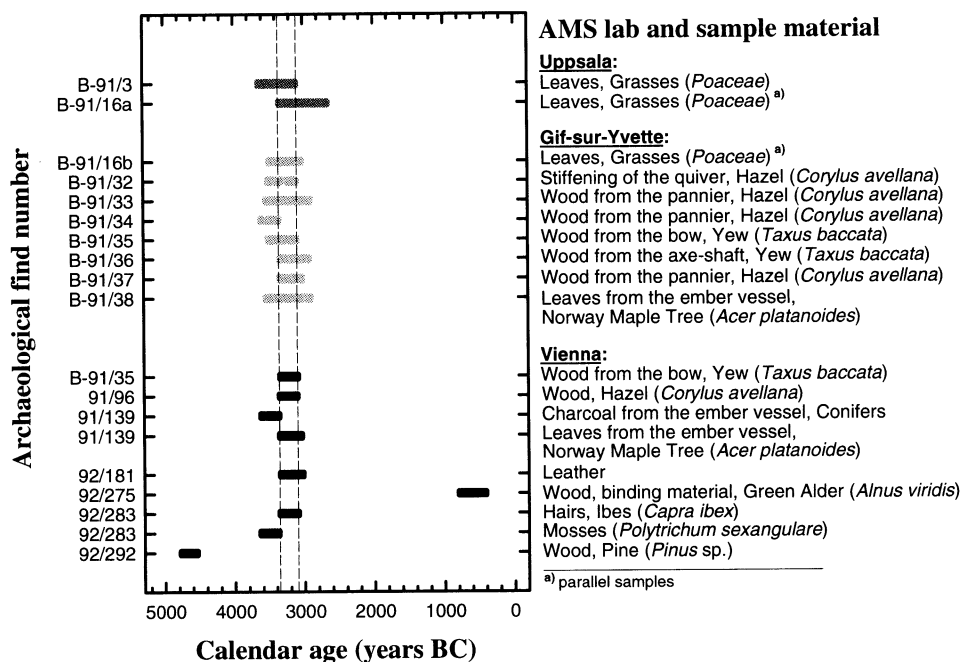


Figure 1 The "Iceman" samples. Horizontal bars indicate 95.4% confidence ranges (2σ), the dashed vertical lines show the 2- σ range obtained from tissue and from bone samples measured at the AMS laboratories of Zurich, Switzerland and of Oxford, England (see text).

THE ICEMAN

Table 1 and Figure 1 show the results of the Iceman samples that originate from 2 excavations in the vicinity of "Ötzi" in 1991 and 1992 (Lippert 1992; Bagolini et al. 1995). The grass samples were taken at the Institute for Forensic Medicine at the University of Innsbruck 1 week after the salvage of the Iceman; all the other samples were taken at the Römisch-Germanisches Zentralmuseum in Mainz in 1991 and 1997. The samples consist mainly of wooden material, but also mosses and leather were dated. The bulk of these samples confirms the time period of 3360–3100 BC previously determined from bone and tissue specimens from the Iceman (Bonani et al. 1992, 1994; Hedges et al. 1992; Prinoth-Fornwagner and Niklaus 1994)¹. However, for 2 wooden samples, clearly deviating dates were found: 790–410 BC (VERA-0048) and 4790–4550 BC (VERA-0052). These samples provide evidence that the site of the Iceman was used as a mountain pass 1500 yr earlier, i.e. at the transition of the Mesolithic to the Neolithic period, confirming an archaeological presumption expressed earlier (Bagolini et al. 1995), and 2000 yr later, i.e. in the Hallstatt period (Figure 1, Table 1). Especially interesting is the younger sample, showing clear working traces (K Oeggel, personal communication 1998). It is the first artifact from the Iron age found in this Alpine region (Kutschera et al. 1998).

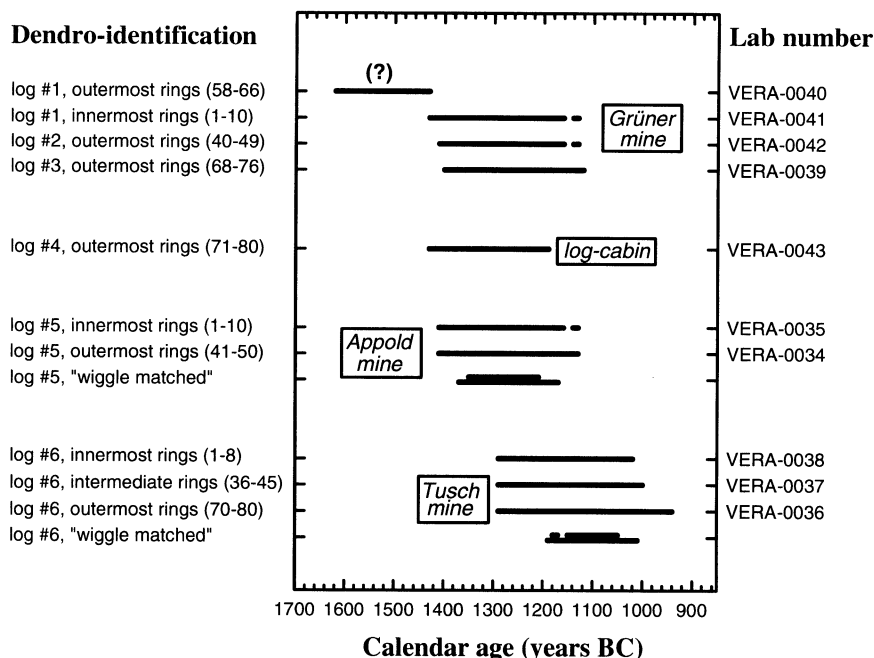


Figure 2 Hallstatt samples from the earliest salt mining period. The measured samples originate from different salt mines (Grüner, Appold, Tusch) at Hallstatt, and from a log cabin found nearby. 2- σ ranges of single calibrated ^{14}C dates from tree-ring samples averaging about 10 consecutive years are shown. The somewhat reduced time ranges (1- σ and 2- σ ranges given) were obtained by "wiggles matching" of these dates for log #5 and #6, respectively, using the calibration program OxCal v2.18 (Ramsey 1995b). They represent the calibrated ages for the respective outermost tree rings being closest to the event to be dated. For log #1 no "wiggles matching" was performed (see text).

The first dates on botanical remains were published in Egg and Spindler (1992). However, information on these findings (e.g. botanical specification) is incomplete. Also, no reference to the calibration curve used and the calibration procedure is given. ^{14}C ages are not given either. This makes it difficult to include these dates in a general comparison. Nevertheless, for completeness, we list these results here: Uppsala/S 3053–2931 BC (1 σ) corresponds to Ua-2374 (G Possnert, personal communication 1992) (see Table 1), Paris/F 3365–3106 BC (1 σ) is likely to be GifA-91413 (Table 1), Cambridge/Mass. USA 3362–3136 BC (1 σ), 3492–3049 BC (2 σ) presumably is GX-18504-AMS (see Prinoth-Fornwagner and Niklaus 1994 and below).

Sample GifA-91402 published in Prinoth-Fornwagner and Niklaus (1994) should be discarded, since according to M Arnold (personal communication 1995) the sample burnt was very small and the contamination was certainly larger than normal. A re-calibration of 2 further grass samples, ETH-8345.3 (4535 \pm 60 BP, $\delta^{13}\text{C}$ = (–25.4 \pm 0.9)‰, 1.5 mg sample size, AAA pretreatment)

¹A combined calibration of the weighted means for tissue (4523 \pm 27 BP) and bone samples (4576 \pm 27 BP) determined at the AMS laboratories of Zurich and Oxford was performed using a time shift of 20 yr for the mean carbon turnover time in bone collagen (see Bonani et al. 1992; Hedges et al. 1992). Calibration yields time ranges of 3350–3320 BC (0.72), 3190–3170 BC (0.12), 3140–3120 BC (0.17) for the 68.2% confidence interval, and 3360–3310 BC (0.63), 3200–3100 BC (0.37) for the 95.4% confidence interval; the numbers in brackets denote the relative probability of finding the true age in the respective time range.

(Bonani et al. 1994) and GX-18504-AMS (4555 ± 48 BP, $\delta^{13}\text{C} = -25.5\text{‰}$) (Prinoth-Fornwagner and Niklaus 1994), yields 3500–3460 BC (0.03), 3380–3020 BC (0.97) and 3500–3460 BC (0.06), 3380–3090 BC (0.94) for the 95.4% confidence intervals; the numbers in brackets following calibrated age ranges denote the relative probability of finding the true age in the respective time range.

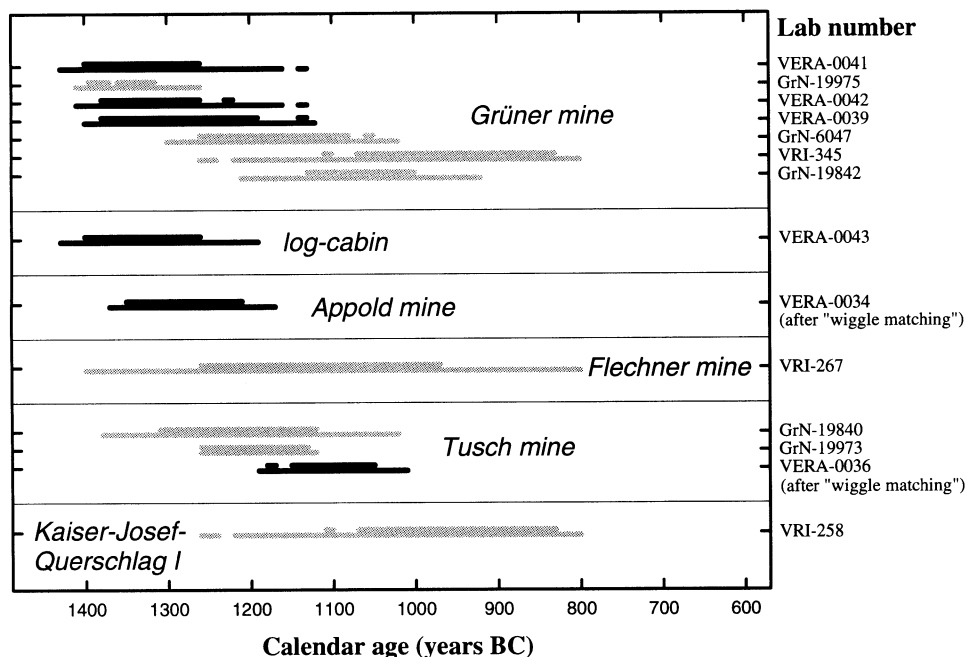


Figure 3 Comprehensive survey of ^{14}C dates of wooden objects from the beginning of salt mining in Hallstatt. Both 1- σ and 2- σ ranges for single calibrated ^{14}C dates are shown. VERI-558 and VERA-0040 have been omitted from this figure as outliers (see footnotes in Table 2b and text, respectively). VERI = Vienna Radium Institute, GrN = Centrum voor Isotopen Onderzoek, Groningen.

THE SALT MINES OF HALLSTATT

The ^{14}C dating of objects presumably originating from the beginning of salt mining in Hallstatt, comprised spruce logs from 3 different prehistoric salt mines and a nearby log cabin on the surface. Two of these mines, the "Appold" and the "Grüner", were rediscovered in 1879 and 1910, respectively (Barth 1993; Barth and Neubauer 1993). They are located in the Northern mining group, which is considered to be the oldest part of the salt mining field of Hallstatt.

The 3rd mine, the "Tusch", was first discovered in 1748 and then rediscovered in 1991 (Barth 1993–1994). Two further samples shown in Figure 3 from the "Flechner" mine and the "Kaiser-Josef-Querschlag I" also belong to the oldest objects found in the salt mines of Hallstatt. The wane (Waldkante) of all logs shown in Figure 2 and Table 2a was still preserved. This enables a direct dating of the felling of the trees without any age offset. Usually, the timber was used only once (presumably) without any preceding storage (P Stadler, personal communication 1999). For all the other samples from Hallstatt (Table 3) no information concerning the trimming of the timbers or the presence of bark or sapwood has been published.

The ^{14}C dates from the "Tusch" mine (Figures 2 and 3, Table 2a) including "wiggles matching" with OxCal v2.18 (Ramsey 1995b) set the beginning of the extraction of salt to the Late Bronze Age, i.e.

the Early Urnfield period. This agrees with data from the same mine published earlier in Barth 1993–94 (see Table 2b, Figures 2 and 3). However, from the ^{14}C dates of findings in the Northern mining group (including “wiggle matching”) one can infer that salt mining had already started in the Northern mining group in the 14th–13th century BC (see the “Grüner” and “Appold” mines in Figures 2 and 3, and Tables 2a and 2b). This corresponds to the transition of the Middle to the Late Bronze Age, i.e. the transition from the Tumulus to the Urnfield period (Lippert 1985). Sample GrN-19975 (see Figure 3) from the “Grüner” mine, which has been discarded as a statistical outlier in Barth 1993–1994, is now well confirmed by the dates obtained at VERA. Therefore, the beginning of salt mining in Hallstatt has to be set 1 to 2 centuries earlier than supposed so far (Barth 1993–94). The even higher age of 1 tree-ring set (see VERA-0040 in Figure 2) remains unexplained, but may reflect some non-removable contamination and therefore resists a reliable “wiggle matching”.

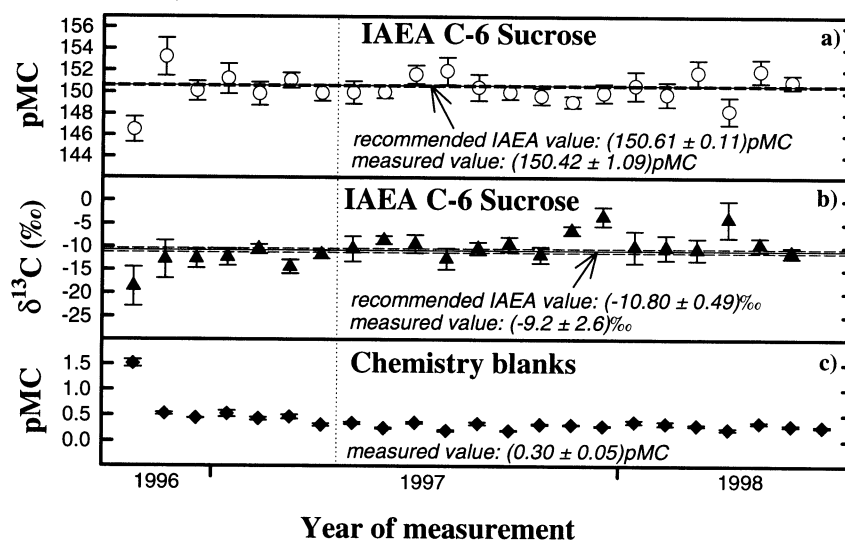


Figure 4 Performance of standards and blanks in regular ^{14}C -dating measurements. a) and b) over 12 months (April 1997–March 1998, symbols left of the vertical dotted line), the values measured for C-6 sucrose relative to C-3 cellulose agree well with the values recommended by the IAEA. The mean values shown are unweighted means, the corresponding errors are the standard deviations from that mean. c) Chemistry blank values. Taking the standard deviation of all the chemistry blank values of the last year (symbols left of the vertical dotted line) from the unweighted mean, our dating limit T_{\max} (see equation 1) now amounts to 55 ka. For clarity, an equidistant representation of data points is given in the figure, since the actual time spacing would tend to cluster the data.

CONCLUSION

Botanical remains from the vicinity of the Iceman, including his equipment, were dated at 3 different AMS laboratories. They show reasonable agreement with dates previously obtained on the tissue and bones of the Iceman himself. Two clearly deviating “outliers” indicate that the discovery site of Ötzi had been used as a mountain pass 1500 yr before the lifetime of the Iceman, and also 2000 yr later. The latter date is particularly interesting, because it constitutes the first artifact from the Iron Age in the entire Ötztal region. Spruce logs from the world’s oldest salt mines at Hallstatt, Austria were subject to ^{14}C dating with AMS. The results from VERA provide evidence that salt mining at Hallstatt started 1–2 centuries earlier than previously supposed, i.e. in the 14th to the 13th century BC.

A current project at VERA carried out in cooperation with the Institute for Botany in Innsbruck, Austria deals with more than 50 additional samples from the site of the Iceman discovery. Besides leather and droppings from animals, the samples include mainly botanical remains such as mosses, grasses, and saxifrages. ^{14}C dating of high Alpine plants may give information about glaciation and possible deglaciation periods at the rock depression where the Iceman died. From these dates, indirect evidence for the climate of the last 5000 yr may be obtained.

ACKNOWLEDGMENTS

This paper would not have been possible without the help of several colleagues who provided information and samples: M Arnold and N Tisnerat-Laborde from the Laboratoire des Sciences du Climat et de l'Environnement in Gif-sur-Yvette, France, G Possnert from the Svedberg-Laboratoriet in Uppsala, Sweden, and S Bortenschlager and K Oeggl from the Institute for Botany in Innsbruck, Austria. We are especially indebted to F E Barth and P Stadler from the Museum of Natural History in Vienna, Austria.

REFERENCES

- Arnold M, Bard E, Maurice P, Duplessy C. 1987. ^{14}C dating with the Gif-sur-Yvette Tandemtron accelerator: status report. *Nuclear Instruments and Methods in Physics Research* B29:120–3.
- Bagolini B, Dal Ri L, Lippert A, Nothdurfter H. 1995. Der Mann im Eis: Die Fundbergung 1992 am Tisenjoch, Gem. Schnals, Südtirol. In: Spindler K, Rastbichler-Zissernig E, Wilfing H, zur Nedden D, Nothdurfter H, editors. *Der Mann im Eis: Neue Funde und Ergebnisse (The Man in the Ice, Volume 2)*. Wien and New York: Springer-Verlag. p 3–52.
- Bahn BG, Everett K. 1993. Iceman in the cold light of day. *Nature* 362, 4 Mar:11–2.
- Barfield L. 1994. The Iceman reviewed. *Antiquity* 68: 10–26.
- Barth FE, Felber H, Schauburger O. 1974. Radiokohlenstoffdatierung der prähistorischen Baue in den Salzbergwerken Hallstatt und Dürrenberg-Hallein. *Mitteilungen der Anthropologischen Gesellschaft in Wien* 105:45–52.
- Barth FE. 1993. Der urzeitliche Bergbau im Grüner Werk des Salzbergwerkes Hallstatt. In: Salinen Austria, editors. *Ausstellung Grüner Werk 1986*. 2nd ed. Verlag des Musealvereines Hallstatt. p 1–32.
- Barth FE, Neubauer W. 1993. Salzbergwerk Hallstatt - Appoldwerk - Grabung 1879/80. In: Salinen Austria, editors. *Appoldwerk Grabung 1879/80*. 2nd ed. Verlag des Musealvereines Hallstatt. p 3–53.
- Barth FE. 1993–94. Ein Füllort des 12. Jahrhunderts v. Chr. im Hallstätter Salzberg. *Mitteilungen der Anthropologischen Gesellschaft in Wien (MAGW)* 123/124: 27–38.
- Beckel L, Harl O. 1983. Archäologie in Österreich. Salzburg and Vienna: Residenzverlag. (Reprint by Tosa Verlag, Vienna 1996). p 151–5.
- Bonani G, Ivy S, Niklaus TR, Suter M, Housley MA, Bronk CR, van Klinken GJ, Hedges REM. 1992. Altersbestimmung von Milligrammproben der Ötztaler Gletscherleiche mit der Beschleuniger-Massenspektrometrie-Methode (AMS). In: Höpfel F, Platzer W, Spindler K, editors. *Der Mann im Eis 1. Report of the 1992 International Symposium in Innsbruck*, Publications of the University of Innsbruck 187. 2nd rev ed. Eigenverlag der Universität Innsbruck. p 108–16.
- Bonani G, Ivy S, Hajdas I, Niklaus TR, Suter M. 1994. AMS ^{14}C age determinations of tissue, bone and grass samples from the Ötztal Ice Man. *Radiocarbon* 36(2): 247–50.
- Bortenschlager S, Kofler W, Oeggl K, Schoch W. 1992. Erste Ergebnisse der Auswertung der vegetabilischen Reste vom Hauslabjochfund. In: Höpfel F, Platzer W, Spindler K, editors. *Der Mann im Eis 1. Report of the 1992 International Symposium in Innsbruck*, Publications of the University of Innsbruck 187. 2nd rev ed. Eigenverlag der Universität Innsbruck. p 307–12.
- Coghlan A. 1992. Ötze: the man who came in from the cold. *New Scientist*, 11 Jan: 17–8.
- Donahue DJ, Linick TW, Jull AJT. 1990a. Isotope-ratio and background corrections for accelerator mass spectrometry radiocarbon measurements. *Radiocarbon* 32(2):135–42.
- Donahue DJ, Jull AJT, Toolin LJ. 1990b. Radiocarbon measurements at the University of Arizona AMS facility. *Nuclear Instruments and Methods in Physics Research* B52:224–8.
- Egg M. 1992. Zur Ausrüstung des Toten vom Hauslabjoch, Gem. Schnals (Südtirol). In: Höpfel F, Platzer W, Spindler K, editors. *Der Mann im Eis 1. Report of the 1992 International Symposium in Innsbruck*, Publications of the University of Innsbruck 187. 2nd rev ed. Eigenverlag der Universität Innsbruck. p 254–72.
- Egg M, Spindler K. 1992. Die Gletschermumie vom Ende der Steinzeit aus den Ötztaler Alpen– Vorbericht. *Jahrbuch des Römisch-Germanischen Zentralmuseums Mainz* 39(1):1–114.
- Felber H. 1973. Altersbestimmungen nach der Radio-

- kohlenstoffmethode am Institut für Radiumforschung und Kernphysik IX. *Anzeiger-Österreichische Akademie der Wissenschaften-Mathematisch-naturwissenschaftliche Klasse* 110(1-13):57-65.
- Hedges REM, Housley RA, Bronk CR, van Klinken GJ. 1992. Radiocarbon dates from the Oxford AMS system: Archaeometry datelist 15. *Archaeometry* 34(2): 337-57.
- Jaroff L. 1992. Iceman. *Time Magazine*, Oct 26:62-6.
- Kutschera W, Collon P, Friedmann H, Golser R, Hille P, Priller A, Rom W, Steier P, Tagesen S, Wallner A, Wild E, Winkler G. 1997. VERA: A new AMS facility in Vienna. *Nuclear Instruments and Methods in Physics Research B*123:47-50.
- Kutschera W, Golser R, Priller A, Rom W, Steier P, Wild E, Arnold M, Tisnerat-Laborde N, Possnert G, Bortenschlager S, Oeggl K. Radiocarbon dating of equipment from the Iceman. In: Bortenschlager S, Oeggl K, editors. *The Iceman and His Natural Environment. The Man in the Ice 4*. Vienna: Springer Verlag. Forthcoming.
- Lippert A. 1985. Reclams Archäologieführer Österreich und Südtirol. Stuttgart: Philipp Reclam jun.. p 223-30.
- Lippert A. 1992. Die erste archäologische Nachuntersuchung am Tisenjoch. In: Höpfel F, Platzer W, Spindler K, editors. *Der Mann im Eis 1. Report of the 1992 International Symposium in Innsbruck, Publications of the University of Innsbruck* 187. 2nd rev ed. Eigenverlag der Universität Innsbruck. 245-53.
- Martin BR. 1971. *Statistics for physicists*. London and New York: Academic Press. p 55-61.
- Mook WG, Streurman HJ. 1983. Physical and chemical aspects of radiocarbon dating. In: Mook WG, Waterbolk HAT, editors. *PACT 8: Proceedings of the First International Symposium ¹⁴C and Archaeology, Groningen 1981*. p 31-55.
- Oeggl K. 1995. Neolithic plant remains discovered together with a mummified corpse ("Homo tyrolensis") in the Tyrolean Alps. In: Kroll H, Pasternak R, editors. *Res archaeobotanicae - 9th Symposium IWGP*. Kiel. p 229-38.
- Possnert G. 1984. AMS with the Uppsala EN tandem accelerator. *Nuclear Instruments and Methods in Physics Research B*5: 59-61.
- Priller A, Golser R, Hille P, Kutschera W, Rom W, Steier P, Wallner A, Wild E. 1997. First performance tests of VERA. *Nuclear Instruments and Methods in Physics Research B*123:193-8.
- Prinoth-Fornwagner R, Niklaus TR. 1994. The man in the ice: results from radiocarbon dating. *Nuclear Instruments and Methods in Physics Research B*92:282-90.
- Ramsey CB. 1995a. Radiocarbon calibration and analysis of stratigraphy: the OxCal program. *Radiocarbon* 37(2):425-30.
- Ramsey CB. 1995b. OxCal Program v2.18. URL: <http://units.ox.ac.uk/departments/rlaha/oxcal/oxcal_h.html>.
- Roberts D, Garrett K, Harlin G. 1993. The Iceman. *National Geographic*. June:36-67.
- Rom W, Golser R, Kutschera W, Priller A, Steier P, Wild E. 1998. Systematic investigations of ¹⁴C measurements at the Vienna Environmental Research Accelerator (VERA). *Radiocarbon* 40(1):255-64.
- Schauberger O. 1960. Ein Rekonstruktionsversuch der prähistorischen Grubenbaue im Hallstätter Salzberg. *Prähistorische Forschungen* 5:1-15.
- Spindler K. 1993. *Der Mann im Eis*. München: C. Bertelsmann Verlag GmbH. p 81-5, 93-6.
- Stuiver M, Robinson SW. 1974. University of Washington Geosecs North Atlantic carbon-14 results. *Earth and Planetary Science Letters* 23:87-90.
- Stuiver M, Polach HA. 1977. Discussion: reporting of ¹⁴C data. *Radiocarbon* 19(3):355-63.
- Stuiver, M, Reimer, PJ, Bard, E, Beck, JW, Burr, GS, Hughen, KA, Kromer, B, McCormac, G, van der Plicht J, Spurk, M. 1998. INTCAL98 radiocarbon age calibration, 24,000-0 cal BP. *Radiocarbon* 40(3): 1041-83.
- Urban O. 1989. Wegweiser in die Urgeschichte Österreichs. Vienna: Österreichischer Bundesverlag. p 156-63.
- Vogel JS, Southon JR, Nelson DE, Brown TA. 1984. Performance of catalytically condensed carbon for use in accelerator mass spectrometry. *Nuclear Instruments and Methods in Physics Research B*5:289-93.
- Vogel JS, Nelson DE, Southon JR. 1987. ¹⁴C background levels in an accelerator mass spectrometry system. *Radiocarbon* 29:323-33.
- Ward, GK, Wilson, SR. 1978. Procedures for comparing and combining radiocarbon age determinations: a critique. *Archaeometry* 20(1):19-31.
- Wild E, Golser R, Hille P, Kutschera W, Puchegger S, Priller A, Rom W, Steier P, Vycudilik W. 1998. First ¹⁴C results from archaeological and forensic studies at the Vienna Environmental Research Accelerator. *Radiocarbon* 40(1):273-82.