

## LETTER TO THE EDITOR

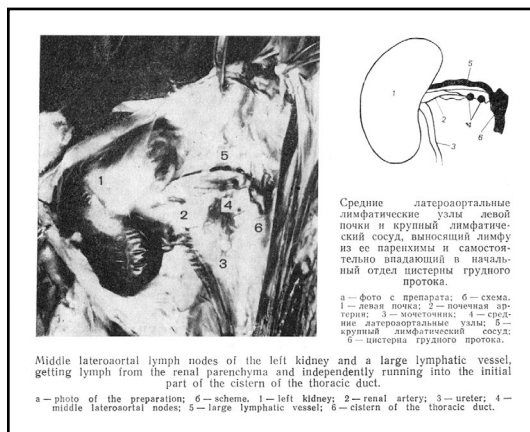
RENAL LYMPHATIC DRAINAGE  
AND THORACIC DUCT CONNECTIONS

Fig. Fragment of page 38 of the article by A.V. Kuznetsov (4).

**Keywords:** renal lymphatic, thoracic duct, anatomy

I read the article "Renal lymphatic drainage and thoracic duct connections: Implications for cancer spread" by J. Assouad et al, published in the March 2006 issue of *Lymphology* (1). I believe it is a very important investigation, and the second conclusion is particularly vital. The authors described and illustrated an anatomical variant of renal lymphatic which terminates in the thoracic duct directly without crossing through any lymph nodes. Exactly the same conclusion was drawn by B. Cunéo in 1902 (2); and later by F. Fuchs and H. Popper-Wien in 1938 (3): the reference to Cunéo is made in the article by J. Assouad et al.

However, there are no digital images of the anatomical variant of renal lymphatic in their articles. The same renal lymphatic (Fig.) was detailed by A.V. Kuznetsov in 1987 (4). The article provides both a photograph and a scheme of the renal lymphatic. Not only should B. Cunéo's reference have been included but also the articles by Fuchs and Popper and A.V. Kuznetsov.

## REFERENCES

1. Assouad, J, M Riquet, P Foucault, et al: Renal lymphatic drainage and thoracic duct connections: Implications for cancer spread. *Lymphology* 39 (2006), 26-32.
2. Cunéo, B: Note sur les ganglions lymphatiques régionaux du rein. *Bull. Mem. Soc. Anat. Paris* 75 (1902), 235-236.
3. Fuchs, F, H Popper-Wien: Blut- and Saftströmung in der Niere (Zur klinischen Bedeutung des Niereninterstitiums). In: *Ergebnisse der Inneren Medizin und Kinderheilkunde* Herausgegeben. Pfaundler, Mv, A Schittenhelm (Eds), Berlin: Verlag von Julius Springer (1938), 1-75.
4. Kuznetsov, A: Extraorganic lymphatic vessels and regional lymph nodes in the dog kidney. *J. Archives of Anatomy, Histology and Embryology. Leningrad. XCIII* (1987), 37-39.

**Alexander V. Kuznetsov, MD**  
**Scientific Research Institute of Clinical**  
**and Experimental Lymphology**  
**Siberian Branch of Russian Academy**  
**of Medical Sciences (ICEL)**  
**E-mail: alexapex@yandex.ru**